

# MENDEL'S PEAS.

## THE QUESTIONS.

HOW MANY KINDS? ————— A

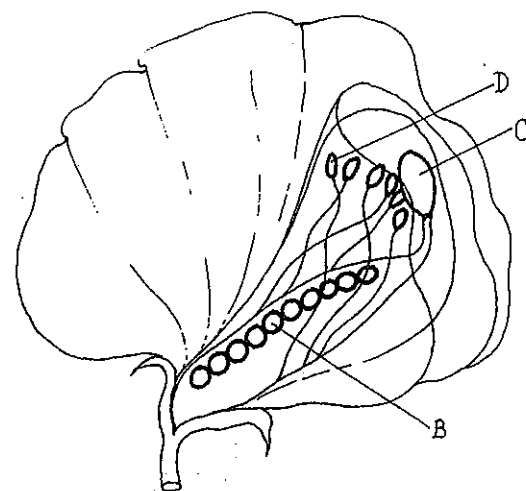
HOW MANY OF EACH? —————

PEA BLOSSOM.

OVULE.

STIGMA.

ANTHER.



## PEA PLANT CHARACTERISTICS.

FLOWER★	PURPLE <sub>E</sub>	WHITE <sub>F</sub>
	AXIAL <sub>G</sub>	TERMINAL <sub>H</sub>
HEIGHT★	TALL	DWARF,
SEED★	YELLOW <sub>K</sub>	GREEN.
	ROUND <sub>M</sub>	ANGULAR <sub>N</sub>
POD★	GREEN.	YELLOW.
	INFLATED.	WRINKLED <sub>R</sub>

